

CONFIRMATION OF FEASIBILITY

Patrick Carr
Finisklin Business Park
Sligo
F91RHH9

8 December 2022

Uisce Éireann
Bosca OP 448
Oifig Sheachadta na
Cathrach Theas
Cathair Chorcaí

Irish Water
PO Box 448,
South City
Delivery Office,
Cork City.

www.water.ie

**Our Ref: CDS22008569 Pre-Connection Enquiry
Newtownholmes Road, Caltragh, Sligo, Sligo**

Dear Applicant/Agent,

We have completed the review of the Pre-Connection Enquiry.

Irish Water has reviewed the pre-connection enquiry in relation to a Water & Wastewater connection for a Multi/Mixed Use Development of 143 unit(s) at Newtownholmes Road, Caltragh, Sligo, Sligo, (the **Development**).

Based upon the details provided we can advise the following regarding connecting to the networks;

Water Connection	Feasible without infrastructure upgrade by Irish Water
Please note, while flows in excess of your required demand may be achieved in the Irish Water network and could be utilised in the event of a fire, Irish Water cannot guarantee a flow rate to meet your fire flow requirement. To guarantee a flow to meet the Fire Authority requirements you should provide adequate fire storage capacity within your development.	
Please note that according to our records there is an existing water main and sewer running through this site (see drawing in Section B below). Any structures or works over or in close proximity to Irish Water infrastructure that will inhibit access for maintenance or endanger structural or functional integrity of the infrastructure are not allowed. The layout of the development must ensure that this pipe is protected and adequate separation distances are provided between Irish Water infrastructure and any structures on site. Alternatively you may enter into a diversion agreement with Irish Water and divert the pipe to accommodate your development. If you wish to proceed with this option, please contact Irish Water at Diversions@water.ie and submit detailed design drawings before submitting your planning application. It will be necessary to provide a wayleave over this pipe to the benefit of Irish Water and ensure that it is accessible for maintenance. For more information, please see go to the link below: https://www.water.ie/connections/developer-services/diversions/	

Wastewater Connection	Feasible without infrastructure upgrade by Irish Water
<p>Please note that according to our records there is an existing water main and sewer running through this site (see drawing in Section B below). Any structures or works over or in close proximity to Irish Water infrastructure that will inhibit access for maintenance or endanger structural or functional integrity of the infrastructure are not allowed.</p> <p>The layout of the development must ensure that this pipe is protected and adequate separation distances are provided between Irish Water infrastructure and any structures on site. Alternatively you may enter into a diversion agreement with Irish Water and divert the pipe to accommodate your development. If you wish to proceed with this option, please contact Irish Water at Diversions@water.ie and submit detailed design drawings before submitting your planning application.</p> <p>It will be necessary to provide a wayleave over this pipe to the benefit of Irish Water and ensure that it is accessible for maintenance. For more information, please see go to the link below: https://www.water.ie/connections/developer-services/diversions/</p>	

This letter does not constitute an offer, in whole or in part, to provide a connection to any Irish Water infrastructure. Before the Development can be connected to our network(s) you must submit a connection application and be granted and sign a connection agreement with Irish Water.

As the network capacity changes constantly, this review is only valid at the time of its completion. As soon as planning permission has been granted for the Development, a completed connection application should be submitted. The connection application is available at www.water.ie/connections/get-connected/

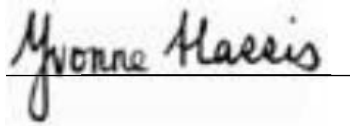
Where can you find more information?

- **Section A** - What is important to know?
- **Section B** - Details of Irish Water's Network(s)

This letter is issued to provide information about the current feasibility of the proposed connection(s) to Irish Water's network(s). This is not a connection offer and capacity in Irish Water's network(s) may only be secured by entering into a connection agreement with Irish Water.

For any further information, visit www.water.ie/connections, email newconnections@water.ie or contact 1800 278 278.

Yours sincerely,

A handwritten signature in black ink that reads "Yvonne Harris". The signature is written in a cursive style and is positioned above a thin horizontal line.

Yvonne Harris
Head of Customer Operations

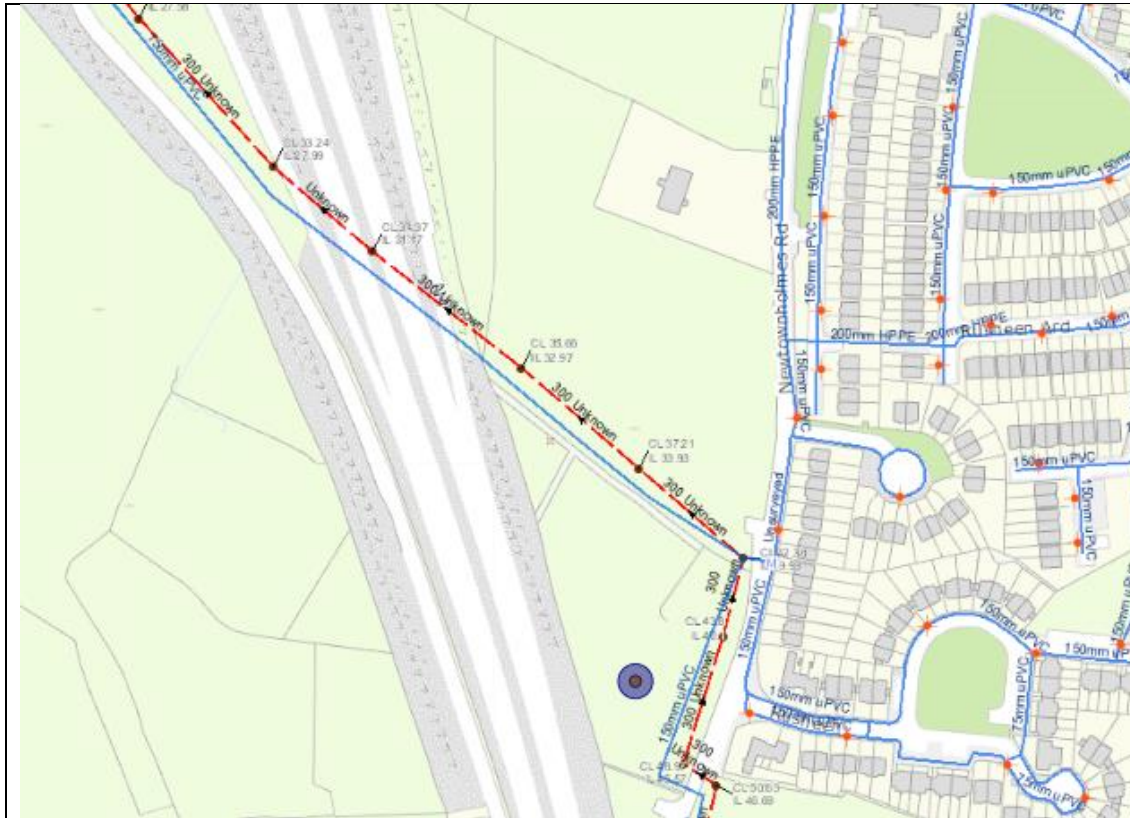
Section A - What is important to know?

What is important to know?	Why is this important?
Do you need a contract to connect?	<ul style="list-style-type: none"> • Yes, a contract is required to connect. This letter does not constitute a contract or an offer in whole or in part to provide a connection to Irish Water's network(s). • Before the Development can connect to Irish Water's network(s), you must submit a connection application <u>and be granted and sign</u> a connection agreement with Irish Water.
When should I submit a Connection Application?	<ul style="list-style-type: none"> • A connection application should only be submitted after planning permission has been granted.
Where can I find information on connection charges?	<ul style="list-style-type: none"> • Irish Water connection charges can be found at: https://www.water.ie/connections/information/charges/
Who will carry out the connection work?	<ul style="list-style-type: none"> • All works to Irish Water's network(s), including works in the public space, must be carried out by Irish Water*. <p>*Where a Developer has been granted specific permission and has been issued a connection offer for Self-Lay in the Public Road/Area, they may complete the relevant connection works</p>
Fire flow Requirements	<ul style="list-style-type: none"> • The Confirmation of Feasibility does not extend to fire flow requirements for the Development. Fire flow requirements are a matter for the Developer to determine. • What to do? - Contact the relevant Local Fire Authority
Plan for disposal of storm water	<ul style="list-style-type: none"> • The Confirmation of Feasibility does not extend to the management or disposal of storm water or ground waters. • What to do? - Contact the relevant Local Authority to discuss the management or disposal of proposed storm water or ground water discharges.
Where do I find details of Irish Water's network(s)?	<ul style="list-style-type: none"> • Requests for maps showing Irish Water's network(s) can be submitted to: datarequests@water.ie

<p>What are the design requirements for the connection(s)?</p>	<ul style="list-style-type: none"> • The design and construction of the Water & Wastewater pipes and related infrastructure to be installed in this Development shall comply with <i>the Irish Water Connections and Developer Services Standard Details and Codes of Practice</i>, available at www.water.ie/connections
<p>Trade Effluent Licensing</p>	<ul style="list-style-type: none"> • Any person discharging trade effluent** to a sewer, must have a Trade Effluent Licence issued pursuant to section 16 of the Local Government (Water Pollution) Act, 1977 (as amended). • More information and an application form for a Trade Effluent License can be found at the following link: https://www.water.ie/business/trade-effluent/about/ <p>**trade effluent is defined in the Local Government (Water Pollution) Act, 1977 (as amended)</p>

Section B – Details of Irish Water’s Network(s)

The map included below outlines the current Irish Water infrastructure adjacent the Development: To access Irish Water Maps email datarequests@water.ie



Reproduced from the Ordnance Survey of Ireland by Permission of the Government. License No. 3-3-34

Note: The information provided on the included maps as to the position of Irish Water’s underground network(s) is provided as a general guide only. The information is based on the best available information provided by each Local Authority in Ireland to Irish Water.

Whilst every care has been taken in respect of the information on Irish Water’s network(s), Irish Water assumes no responsibility for and gives no guarantees, undertakings or warranties concerning the accuracy, completeness or up to date nature of the information provided, nor does it accept any liability whatsoever arising from or out of any errors or omissions. This information should not be solely relied upon in the event of excavations or any other works being carried out in the vicinity of Irish Water’s underground network(s). The onus is on the parties carrying out excavations or any other works to ensure the exact location of Irish Water’s underground network(s) is identified prior to excavations or any other works being carried out. Service connection pipes are not generally shown but their presence should be anticipated.